



Expert support, seamless execution, and high-quality lighting—our commitment to efficiency, sustainability and reliability sets us apart.

Year: 2024
Space type: Office Building
Situating: London, UK

Edenica Fetter Lane

About project

Rising above 100 Fetter Lane in London, Edenica redefines the future of office spaces with its seamless blend of modern aesthetics and environmental consciousness. Designed by Fletcher Priest Architects and Waterman Group, this 12-story building prioritizes sustainability, occupant well-being, and energy efficiency. Expansive terraces, a communal sixth-floor terrace, and abundant natural light create a workspace that feels open and connected to nature. Edenica operates entirely on electric power, utilizing air source heat pumps and an innovative passive cooling system that leverages exposed concrete soffits to regulate indoor temperatures naturally. Consuming only half the energy of comparable buildings, it stands as a benchmark for responsible urban development.

One of its most groundbreaking features is London's first-ever 'materials passport'—a digital database documenting all materials used in construction to enable future disassembly, reuse, and recycling. This pioneering approach supports the circular economy and sets a new standard for sustainable building practices. Recognized for its environmental and technological advancements, Edenica has achieved WiredScore Platinum certification for digital infrastructure, BREEAM Outstanding for sustainability, and was named "Best Net Zero Project of the Year" at the Consultancy and Engineering Awards.

Halla is proud to be a lighting partner in this innovative project. Our bespoke luminaires are designed to enhance both the energy efficiency and visual appeal of Edenica, perfectly aligning with its commitment to sustainability and occupant comfort. By integrating smart lighting solutions that optimize energy use and complement the building's natural aesthetics, we contribute to an environment where design and responsibility go hand in hand.

We are proud to be a lighting partner in this innovative project. Across the Cat A office space, our Lina 80 direct/indirect pendant luminaires shine in three different lengths, contributing to an overall 1,000 meters of Halla linear lighting illuminating the space. Over the course of six months, we successfully managed the production and delivery in three phases, tailoring our solutions to the client's needs. Our bespoke luminaires not only enhance the building's energy efficiency but also create a balanced and comfortable lighting environment, perfectly aligning with Edenica's commitment to sustainability and occupant well-being.



Charlie Richardson
Senior Electrical Engineer, ESG

Working with HALLA UK on this project has been massively refreshing. The continued support from finalising the order to the on-time delivery has been great. Mark is always available, and the luminaires were all delivered and installed with no quality issues at all which when you consider there was over 1km of lighting, we are delighted, and the lights look great!

Nick Harvey
Electrical Associate, Waterman Building Services Ltd

Project Edenica been designed with wellbeing and sustainability at its core. The building will be all-electric and use 30% less energy than the currently required standards, and is designed to be net-zero carbon in operation. Through the design stages, we worked tirelessly to ensure we had the most energy efficient MEP solutions. With the help of Mark, Jordan and the team at Halla UK, we were able to provide the building with a high efficacy lighting system for the Cat A spaces. The Team at HALLA UK assisted us with selection, calculation and site-based queries to ensure a smooth process from design through to completion.

Lighting used



Lina80

420

pieces of linear luminaires in the project

1045

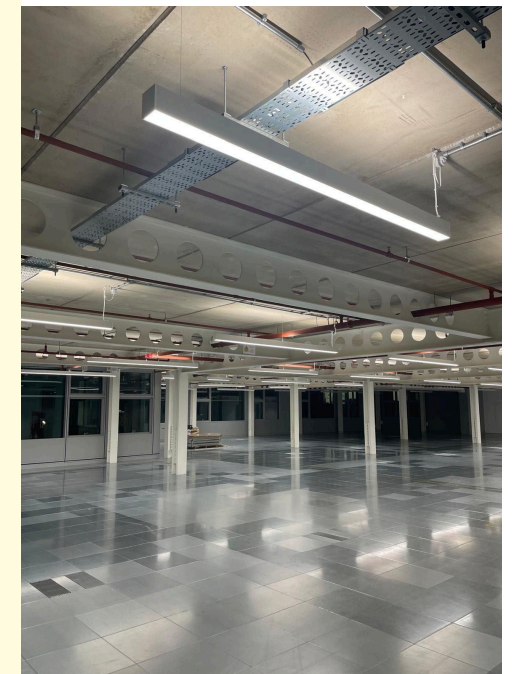
meters of Lina80 luminaires

146 lm/w

efficacy of the luminaires

0%

share of claimed luminaires





Edenica Fetter Lane

Year: 2024
Space type: Office Building
Situating: London, UK

